

Utilized to capture

- Digital serial video signals with embedded audio and ancillary data **up to 3 Gbps** bitrate with **3G-SDI** interface
- Transport streams with **ASI** interface

About the product



Interface

Video review

Specifications

Applications

Main features

4x

4 inputs 3G-SDI/ASI



Embedded audio and ANC can be captured along with active video

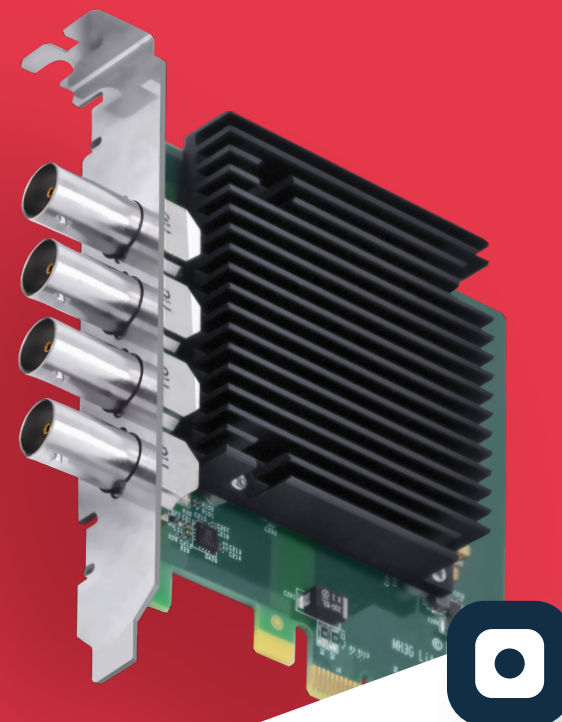


Stream Labs SDK supported for low-level functions, direct access to a raw data buffer



Medialooks SDK supported for high-level functions, ANC parsing

www.stream-labs.com

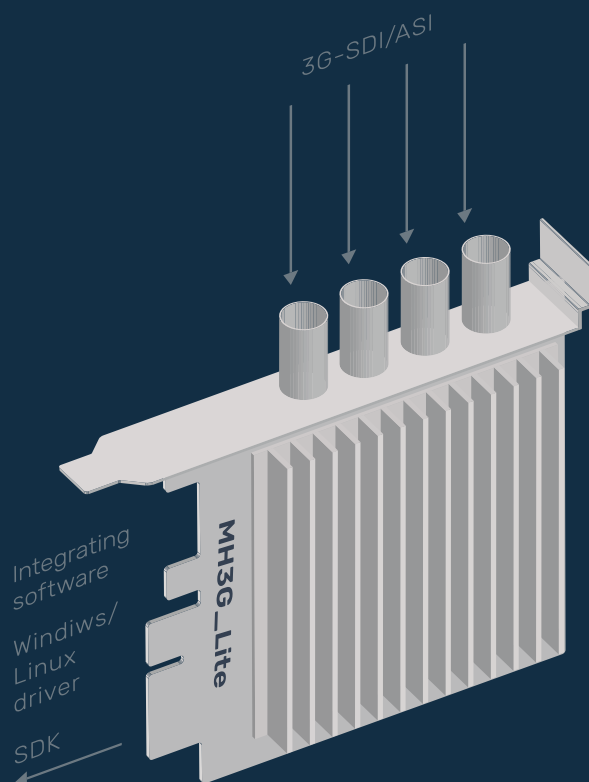


Stream Labs MH3G_Lite

image and sound
capture card

**Designed for professional
24/7/365 use**

4 inputs 3G-SDI/ASI



Applications

For use in studio and digital TV equipment applications:

- NLE suites
- Ingest servers
- Video switchers and master controls
- Digital studio matrix
- Signal transformation equipment
- Transport stream multiplexers
- H.264/H.265/AV1/VVI encoders
- Digital TV modulators

Specification

Physical interfaces

4xBNC for signals

Input signals

3G/HD/SD by SMPTE 259M, SMPTE 292M, SMPTE 296M, SMPTE 310M, SMPTE 425M, ITU-R BT.656 and ITU-R BT.601 with support of:
– 16 channel embedded audio
– ANC metadata
ASI

Video signal formats

• 3G	1080p @ 50	1080p @ 59.94	1080p @ 60
• HD	1080p @ 23.98	1080p @ 24	1080p @ 25
	1080p @ 29.97	1080p @ 30	1080i @ 50
	1080i @ 59.94	1080i @ 60	720p @ 50
	720p @ 59.94	720p @ 60	
• SD	525i @ 59.94	625i @ 50	

Sampling

4:2:2
8 bits (YUYV, UYVY)
10 bits (V210, 10 in 16)

Color space

REC 601, REC 709

Audio format

48 kHz/24 bits, embedded in SDI

Software

Stream Labs SDK
Medialooks SDK (license required)
Linux and Windows driver

Bus

4xPCI Express 2.0

MH3G_Lite

