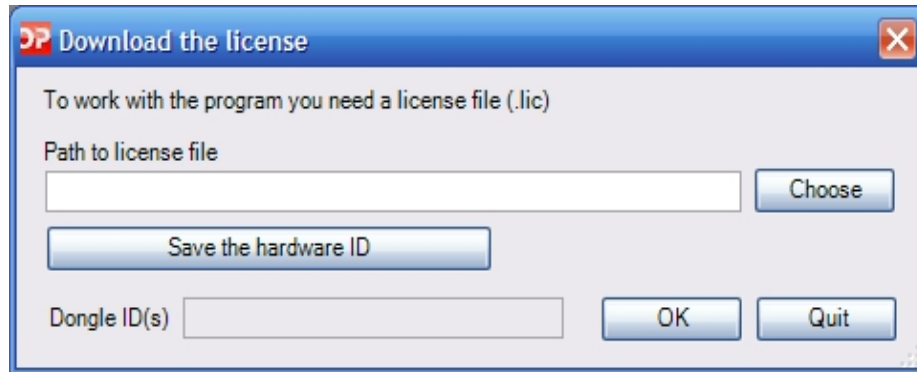


1. ADDING LICENSE TO OPLAN SOFTWARE

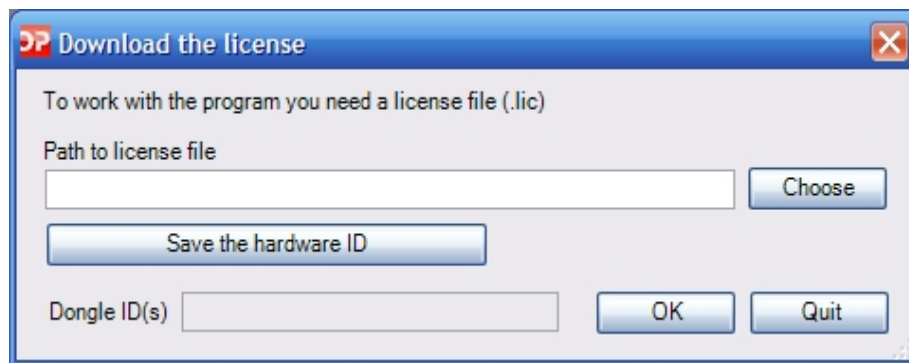
1.1. Operating with license at first launch of the program.

At first launch the program will give you a choice of using an existing database or creation of a new one. In case of creation of new database you will have to enter path to file with license.

Press button «Choose» and select file, received from Stream Labs, in a file tree.



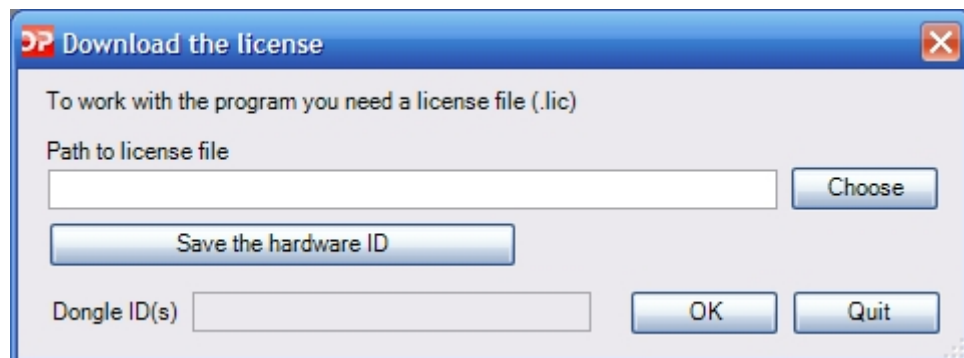
If you need license, which relates to certain type of equipment, then you will be asked about equipment code. You can receive it pressing button «Save the hardware ID».



After pressing of this button interface will pop up. Indicate path to file with license, arbitrary name and email this file to us. Based on submitted information, file with license will be generated

If you are going to use USB dongle, then special license will be generated which will enable software only with this dongle.

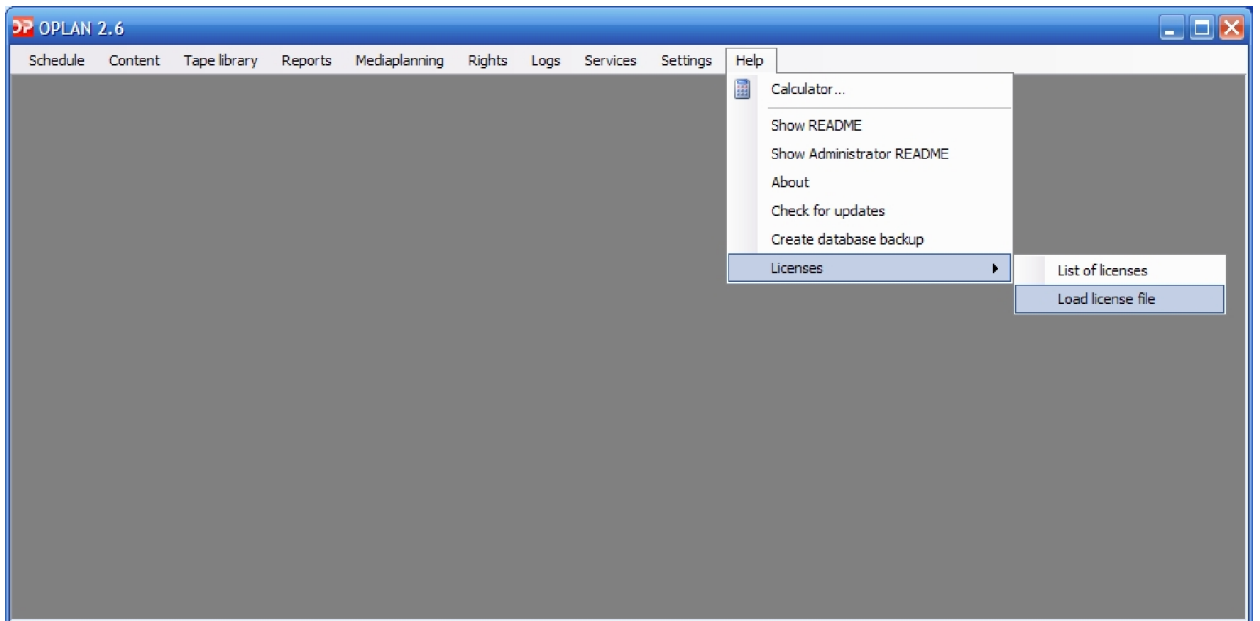
You will have to email us numeric ID of your dongle. Insert dongle into USB port and its id will show up in Dongle ID(s) field.



1.2. Work with licenses.

Go to Help -> Licenses.

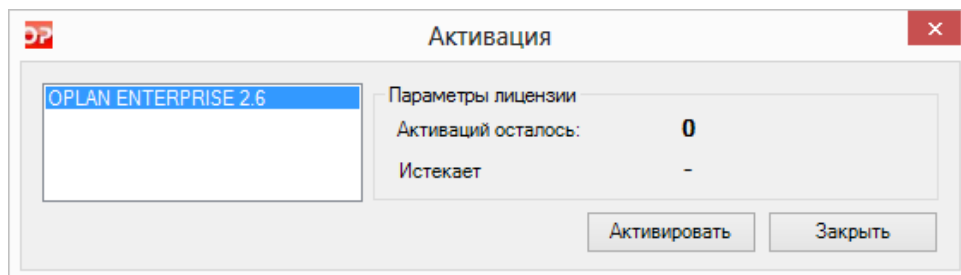
Its submenu comprises all necessary tools for work with licenses.



1.2.1. Sub-menu «License Management»


Once it is selected, you will see pop-up window with options for activation. It can be used as an interface for additional activations on this PC.

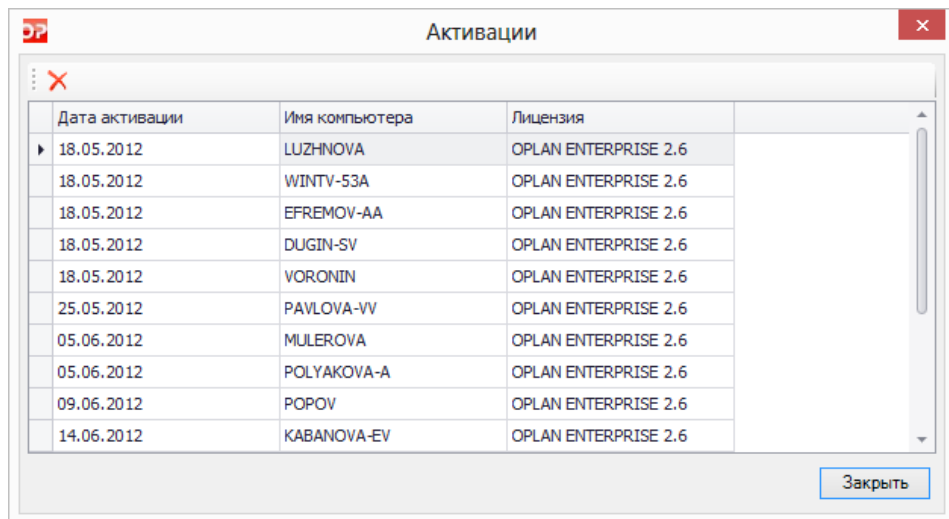
Also, it will display how many and what type of activations remain, and expiration dates.



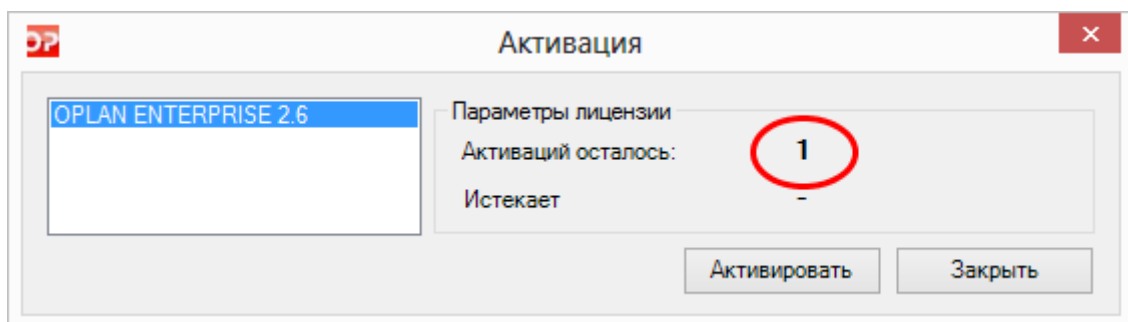
1.2.2. Sub-menu «Activation»

This window displays all activations for your licenses: dates, types of activation, name of PC, at which given activation has been executed.

In order to release activation press button .

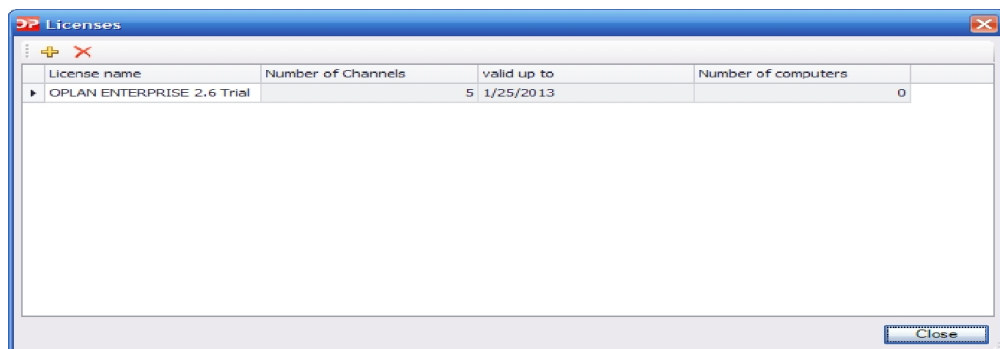


After release of activation license, available for use, will show up in «Activation» window.



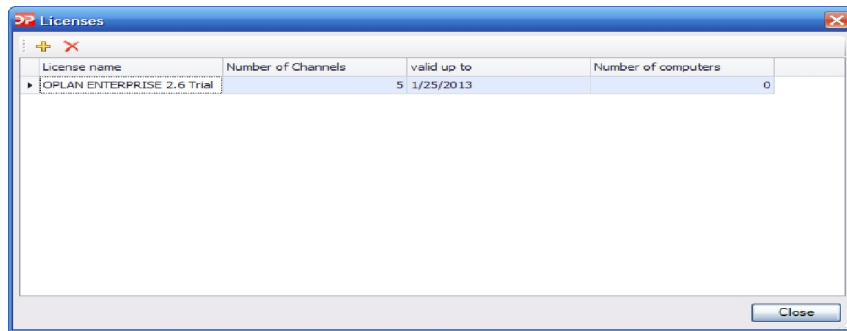
1.2.3. Sub-menu «List of licenses»


In this pop-up window you will see all licenses, available for your business.



Using this interface, you can add/remove licenses.

For addition press button . Select file with license in a file browser



In order to remove license press button  .