

MS SQL Server 2008 Installation Guide for Stream-Labs products

Install SQL Server R2 Express 2008. It is important to install exactly this version since it has been well tested with Stream-Labs software. Also, you can request SQL Server from Stream Labs' support.

E-mail: support@stream-labs.com

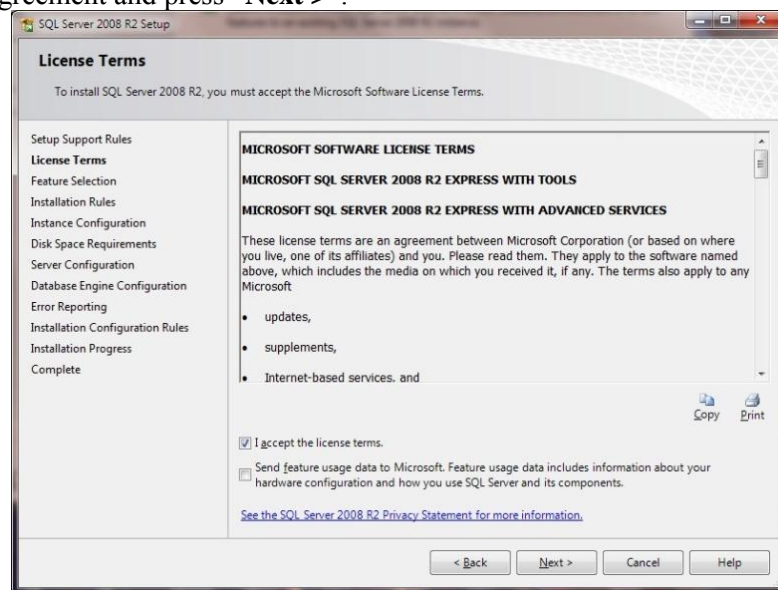
-Start installer of SQL Server R2 Express 2008 and select "New installation or add features to an existing installation".

-Accept license agreement and press "Next >".

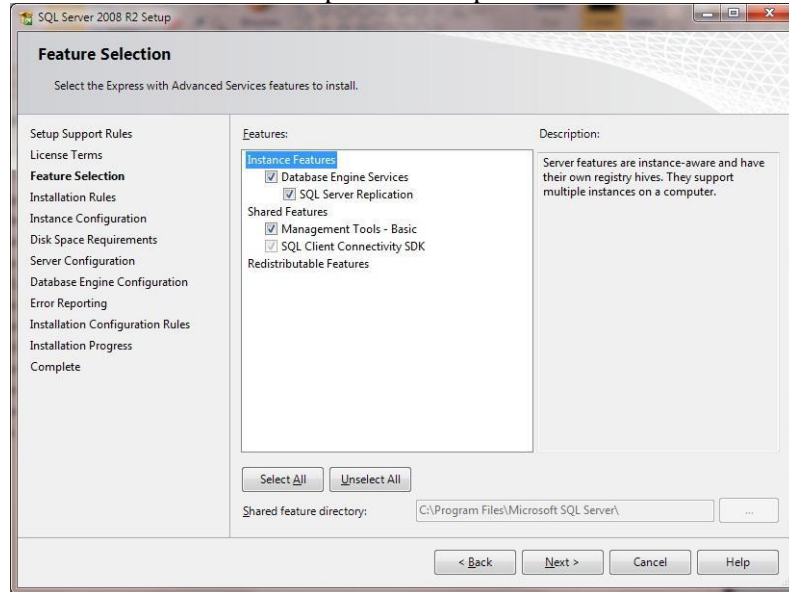
-If dialog window «**Reboot of computer is required**» pops up, then press "OK" and proceed with installation.

After reboot do following:

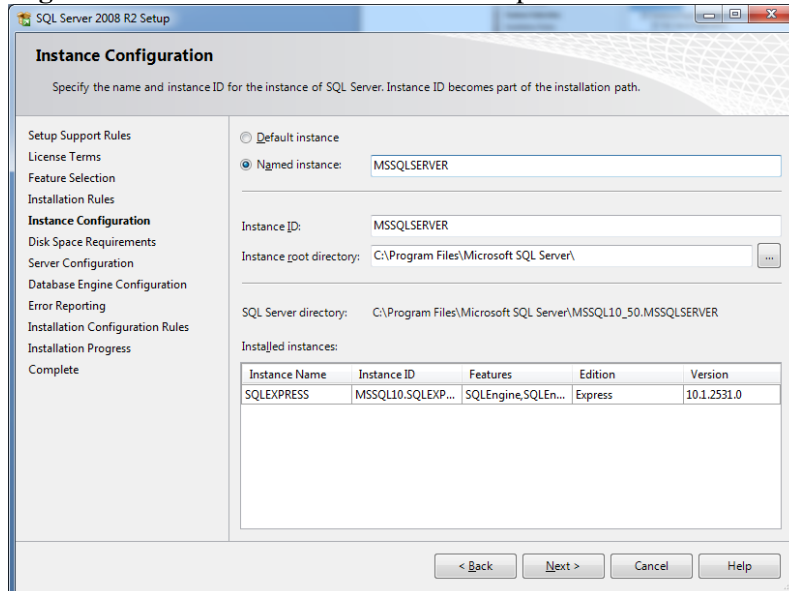
1. Start SQLEXPRESS_x86(x64)EN.exe
2. Select "New installation or add features to an existing installation" in setup window.
3. Accept license agreement and press "Next >".



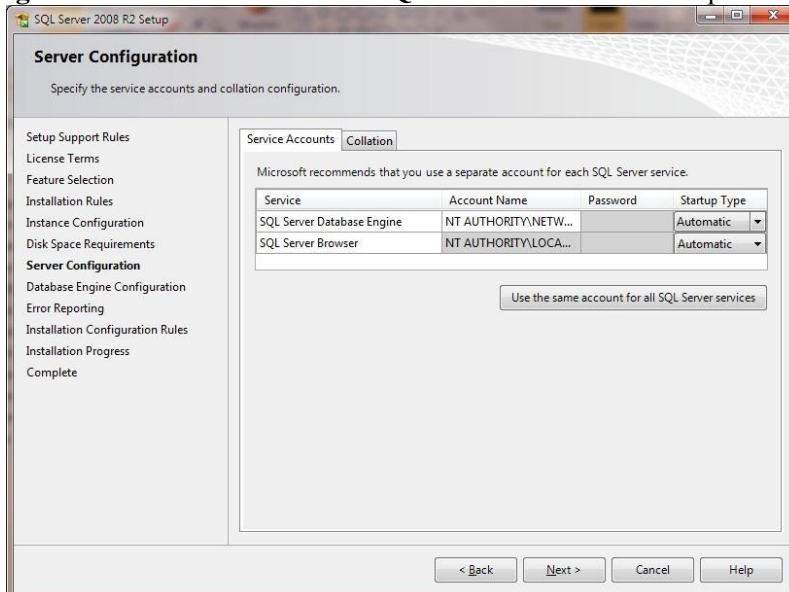
4. In “Feature Selection” check mark all components and press “Next->”.



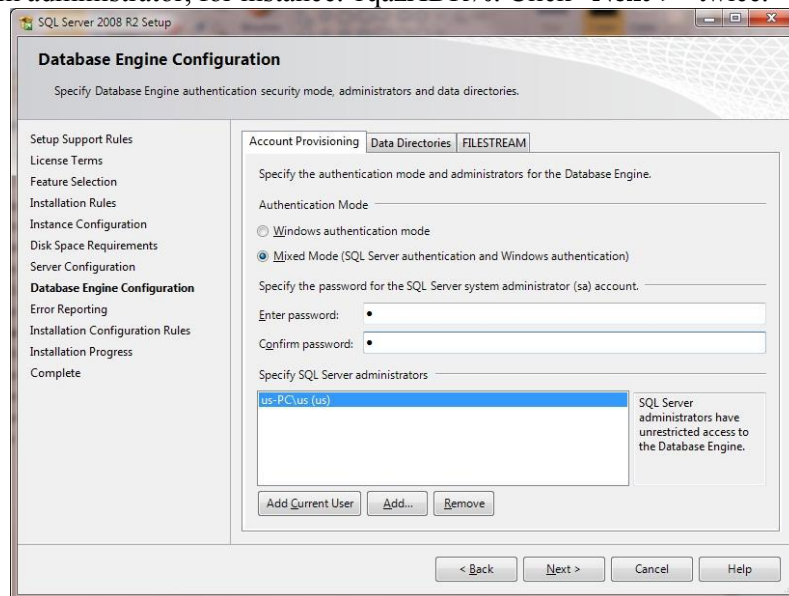
5. In “Instance Configuration” select «Named instance» and press “Next->”.



6. In “Server Configuration” select “Auto” for «SQL Server Browser» and press “Next->”.



7. In «**Database Engine Configuration**» select “**Mixed Mode**” for “**Authentication Mode**” and set password for system administrator, for instance: 1qazXDR%. Click “**Next->**” twice.



8. Wait until installation finishes.

More detailed information on setup and functioning of Stream-Labs products is available on website of Stream Labs:

<http://www.stream-labs.com/>